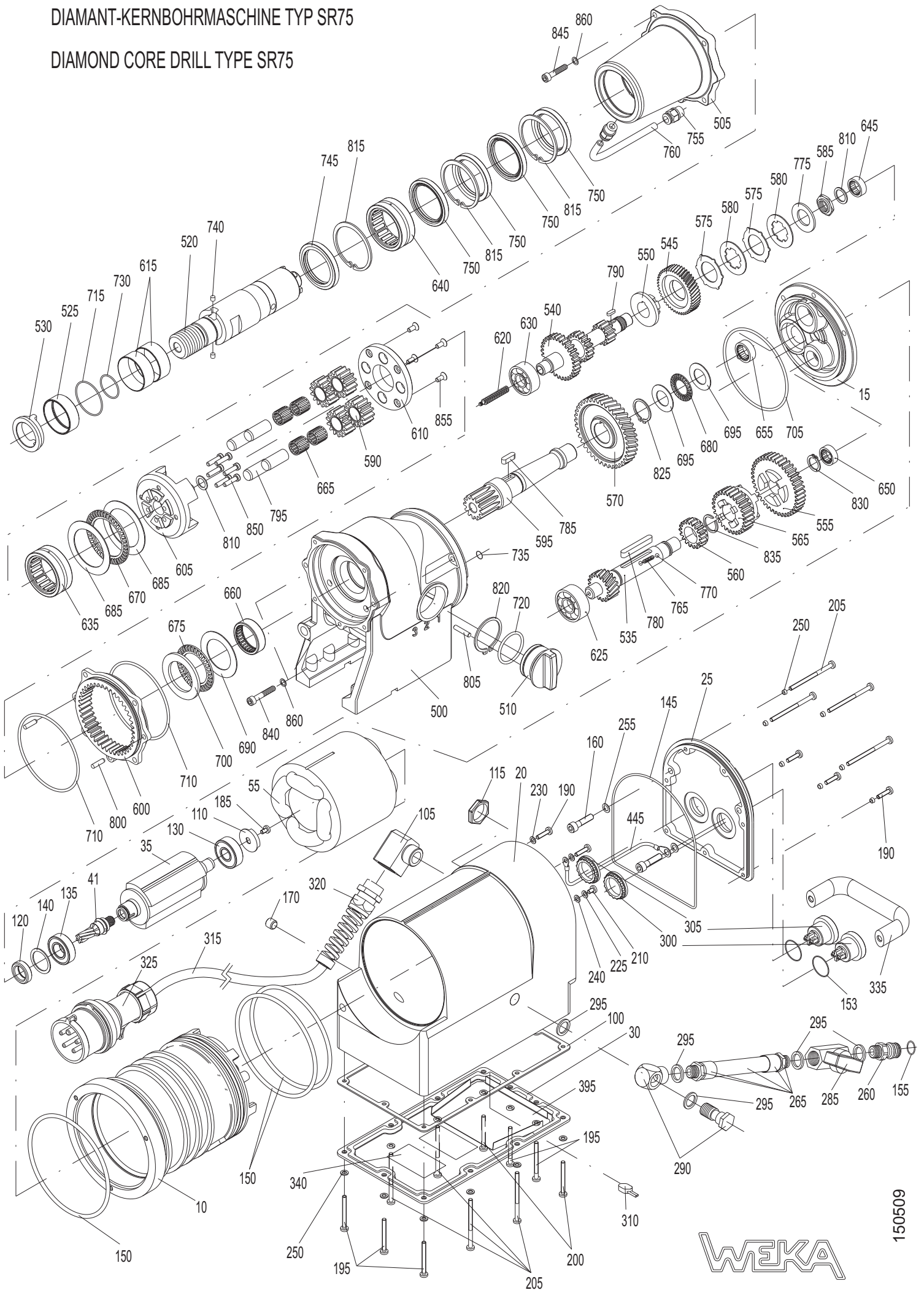


DIAMANT-KERNBOHRMASCHINE TYP SR75

DIAMOND CORE DRILL TYPE SR75



WEKA

150509

Spare Parts List Diamond Core Drill Type SR 75

EE-SR7 030310

Fig	No	Description	Standard	Part no	Fig	No	Description	Standard	Part no
10	1	Motorcase		SR30101	555	1	Gear Wheel 1		DK30212
15	1	Intermediate Flange		SR70102	560	1	Gear Wheel 3		DK30213
20	1	Case Sleeve		SR30104	565	1	Slide Gear Wheel		DK30214
25	1	Switch Cover		SR30133	570	1	Spindle Wheel		SR70215
30	1	Terminal Case Cover		SR30135-1		1	Spindle Wheel	Type S	SR70215S
35	1	Rotor compl.		SR70108	575	2	Brake Disk		SR30218
41	1	Rotor pinion		SR70113	580	2	Pressure Disk		SR30219
55	1	Stator compl.		SR70109	585	1	Hexagon Nut		SR30220
100	1	Terminal Case Sealing		SR30122	590	4	Planet Wheel		SR70218
105	1	Cable Angle	M20x1,5	DK40140-1	595	1	Sun Shaft		SR70220
110	1	Sensor-Disc		SR30118	600	1	Hollow Wheel		SR70222
115	1	Hexagon Nut	M20x1,5	8806020	605	1	Planet-Wheel Carrier w. pins		SR70224C
120	1	Rotary Shaft Seal	14x24x7	5014247	610	1	Carrier Disk		SR70226
130	1	Ball Bearing	6201 ZZ	6062012	615	2	Shaft Wearing Sleeve		SR70210
135	1	Ball Bearing	6002 RS	6060022	620	1	Feed Worm		SR30230
140	1	Compensation Washer		2632201	625	1	Ball Bearing	6302	6063020
145	1	O-Ring	RDR 135x2	4513502	630	1	Ball Bearing	6201	6062010
150	3	O-Ring	RDR 110x4	4511004	635	1	Needle Bearing	NKS45	6345600
153	2	O-Ring	RDR 20x1,5	5520015	640	1	Needle Bearing	NKS43	6343580
155	1	O-Ring	RDR 11x2,5	5511025	645	1	Needle Bearing		6349000
160	2	Hex. Socket Head Screw	M6x20	0106020	650	1	Needle Bush	HK1412	6314120
170	1	Locking Screw	R1/8"	7018008	655	1	Needle Bush	HK2016	6320160
175	6	Cheese head screw	M3x8	0303008	660	1	Needle Bush	HK3512	6335120
180	10	Cheese head screw	M3x14	0303014	665	4	Needle Cage	K14x18x17	6414187
185	4	Cheese head screw	M4x8	0304008	670	1	Thrust Needle Bearing	AXK5070	6550700
187	4	Cheese head screw	M4x14	0304014	675	1	Thrust Needle Bearing	AXK4060	6540600
190	5	Cheese head screw	M4x16	0304016	680	1	Thrust Needle Bearing	AXK2035	6520350
195	5	Cheese head screw	M4x40	0304040	685	2	Thrust Bearing Washer	AS5070	6550701
200	2	Cheese head screw	M4x45	0304045	690	1	Thrust Bearing Washer	AS4060	6540601
205	8	Cheese head screw	M4x60	0304060	695	2	Thrust Bearing Washer	AS2035	6520351
210	1	Slot. Pan Head Screw	M4x6	0304006	700	1	Washer disc	LS4060	6540603
215	1	Slot. Count. Head Screw	M5x16	0405016	705	1	O-Ring	RDR102x3	5510203
220	1	Hexagon Nut	M5	1005000	710	2	O-Ring	RDR96x3	5596003
225	2	Curved Spring Washer	A4	1804137	715	1	O-Ring	RDR42x1,5	5542015
230	6	Locking Washer	SM4	1804000	720	1	O-Ring	RDR36x3	5536003
240	1	Medium Washer	4,3x8 Ms	1804433	730	2	O-Ring	RDR28x1,5	4528015
250	18	Sealing Washer	M4	1804001	735	1	O-Ring	RDR9x3	5509003
255	2	Sealing Ring	6x1	1806002	740	2	Damper	D5x5	4550005
260	1	Quick Connect Nipple		DK20225	745	1	Rotary Shaft Seal	AS45x60x7	5045601
265	1	Hose Piece with nipples		DK30235	750	4	Rotary Shaft Seal	A45x60x7	5045607
285	1	Ball Valve		7014001	755	2	Quick Connect Nipple	G1/4"8	7014668
290	1	Angle Screwing	G1/4"	7015010	760	1	Junction Hose	5/8x110	7058110
295	5	Sealing Ring	G1/4"	7014003	765	1	Pressure Spring		4305235
300	1	On-Button		8011313	770	2	Ball	4	2204000
305	1	Off-Button		8011221	775	1	Disk Spring	35,5x18,3x2	4035182
310	1	Thermal Switch		8050100	780	1	Parallel Key	A6x6x45	3006045
315	1	Cord		8740154	785	1	Parallel Key	A6x6x20	3006020
320	1	Cord Gland	M20x1,5	8804020	790	1	Parallel Key	A4x4x10	3004010
325	1	Mains Plug	CEE16A 6h	8016005	795	4	Parallel Pin	14m6x36	2514036
335	1	Carrying Handle		8910050	800	2	Parallel Pin	6m6x20	2506020
340	2	Desiccation Bag	glued	7040601	805	1	Parallel Pin	5m6x25	2505025
					810	2	Shim Ring	PS14x20x1	1914201
500	1	Gear Box		SR70201	815	3	Retaining Ring	J60x2	3460002
505	1	Bearing Case		SR70204	820	1	Retaining Ring	42x1,75	3542175
510	1	Gear Change Grip		SR70203C	825	1	Retaining Ring	26x1,2	3526012
520	1	Drill Spindle 1 1/4" UNC		SR70206	830	1	Retaining Ring	16x1	3516001
525	1	Sleeve		AE70230	835	1	Retaining Ring	SW20	3620000
530	1	Pressure Ring		AE70235	840	3	Hex. Soc. Head Screw	M6x35	0106035
535	1	Gear Change Shaft		SR70207	845	5	Hex. Soc. Head Screw	M6x30	0106030
	1	Gear Change Shaft	Type S	SR70207S	850	6	Hex. Soc. Head Screw	M5x20	0105020
540	1	Pinion Shaft		SR30208-1	855	4	Hex. Count. Head Screw	M5x12	0405012
545	1	Spur Wheel		SR30209	860	8	Locking Washer	SM6	1806000
550	1	Bearing Bush		SR30221		1	Gear Oil	500 ml	9050001

Please specify in case of spare part orders: Machine No., Quantity, Description, Part No. and for electrical parts the voltage